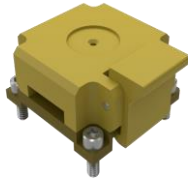
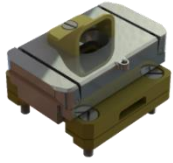


# ONE-STOP HIGH PERFORMANCE TEST CONTACTING SOLUTIONS

## Families of Manual Actuator Assemblies

SINGLE LATCH SPRING LOADED



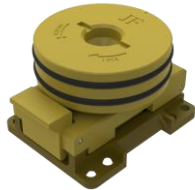
LOW PROFILE, OPTICAL



DOUBLE LATCH SPRING LOADED



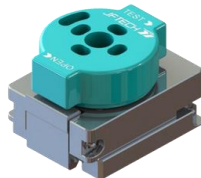
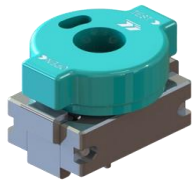
SINGLE LATCH TURN KNOB



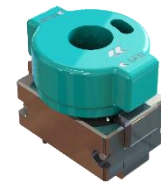
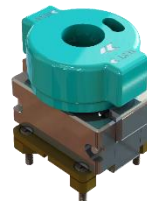
DOUBLE LATCH TURN KNOB



SINGLE LATCH TURN KNOB (ECO)



DOUBLE LATCH TURN KNOB (ECO)



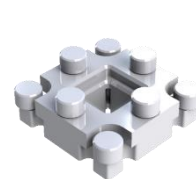
CAM-ACTUATED



UNIVERSAL DEVICE SIZE,  
AUTO CENTERING



THUMB SCREW/  
WING SCREW



\*\* Custom Manual Actuator designs available by request

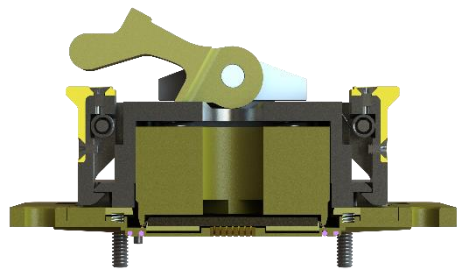
	Single latch	Double latch	Special / custom
WITHOUT TURN KNOB	✓	✓	
WITH TURN KNOB	✓	✓	
WITH TURN KNOB (ECO)	✓	✓	
CAM-ACTUATED	✓	✓	
AUTO-CENTERING			✓
THUMB SCREW / WING SCREW			✓

Standard Materials Construction = ≤ 150°C Environmental Temperature Range  
Extreme Materials Construction = ≤ 200°C Environmental Temperature Range

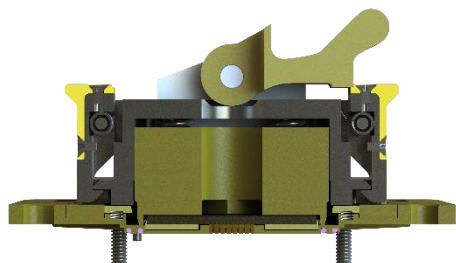
## Theory of Operation

### Direct Push Style Actuation

Before:



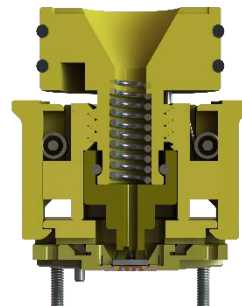
After:



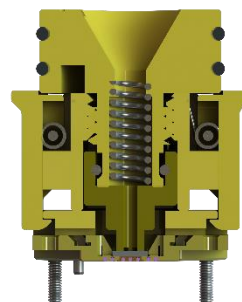
The Cam-actuated Style Manual Actuator directly pushes the device down using a lead backer. Typically, Direct Push includes a floating plate or ejector mechanism for device ejection post-testing.

### Spring-Loaded Style Actuation

Before:

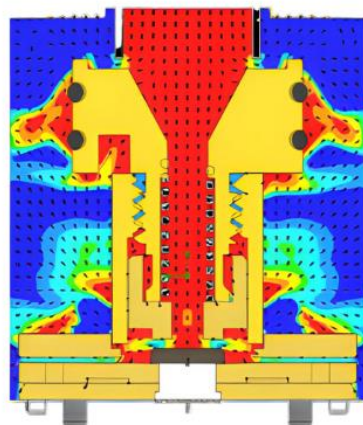
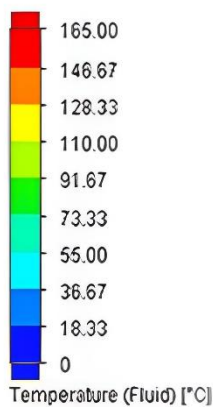


After:



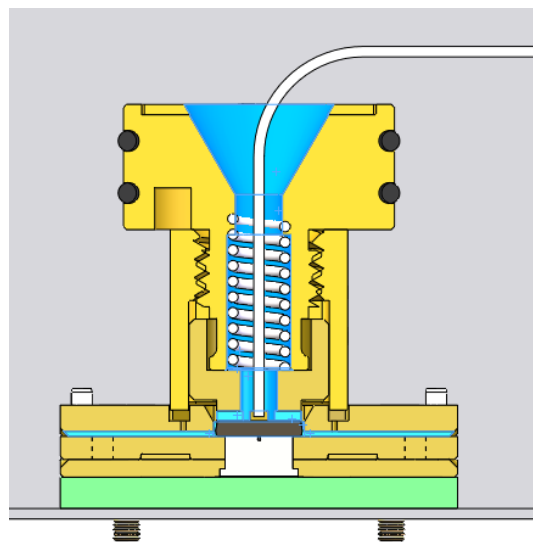
The Double Latch Turn Knob Style Manual Actuator latches onto a Holder Plate or Alignment Plate to secure to the test socket. Rotating the knob applies spring force pushing the lead backer down onto the device.

## Thermal Conditioning of Device



Cut Plot 1: contours  
Surface Plot 1: contours

Cross-sectional image showing airflow through the manual actuator and flowing out of the four leadbacker exit channels to uniformly condition device.



Compatible with chamber and inlet tube style Thermo-Stream configurations

**Note \*** : The stated specifications are based on JF Microtechnology's Laboratory Test; the results may vary subjected to the test environment conditions. Information furnished by JF Microtechnology is believed to be accurate and reliable. However, no responsibility is assumed by JF Microtechnology for its use, nor for any infringements of patents or other rights of third parties that may result from its use. Specifications subject to change without notice. No license is granted by implication or otherwise under any patent or patent rights of JF Microtechnology. Trademarks and registered trademarks are the property of their respective owners.

Sales & Service Representatives